

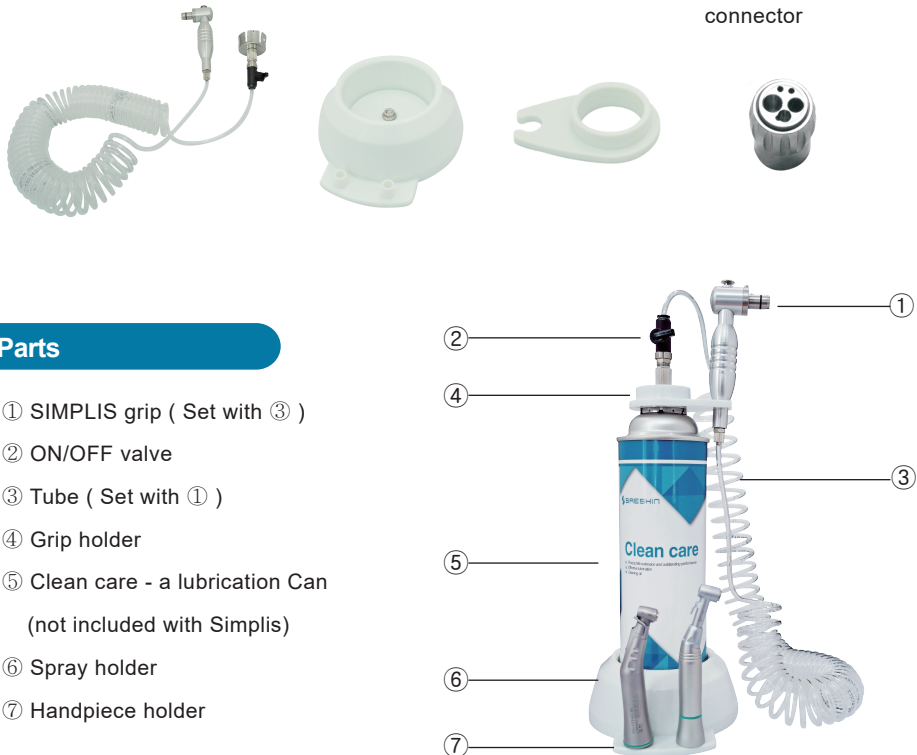
# SIMPLIS lubricating system

## Instruction Manual

- Thank you for purchasing this SAESHIN product.
- The Handpiece will have longer life span if you use it for its intended purpose and maintain regularly.
- Please keep this manual for future reference.
- Our company is not responsible for accidents that happen due to not following the instructions manual properly.
- User is responsible for operation and maintenance of this product.

### Components

- ① SIMPLIS grip      ② Spray holder      ③ Grip holder      ④ High-speed handpiece connector



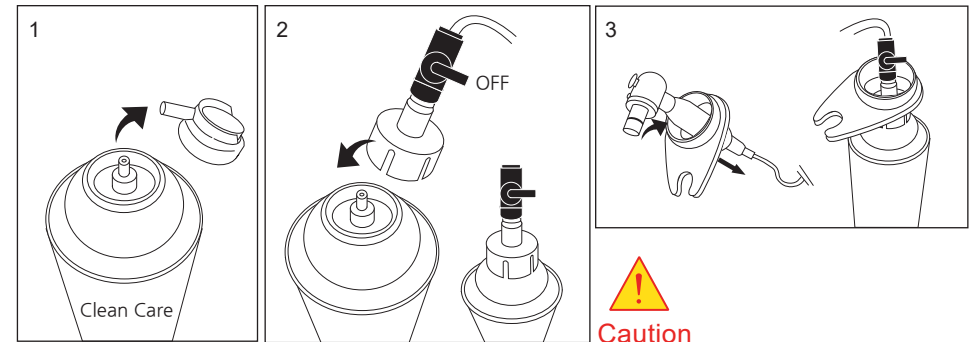
### Parts

- ① SIMPLIS grip ( Set with ③ )  
② ON/OFF valve  
③ Tube ( Set with ① )  
④ Grip holder  
⑤ Clean care - a lubrication Can  
(not included with Simplis)  
⑥ Spray holder  
⑦ Handpiece holder

### How to Assemble

1. Separate the Cap from lubrication Can.
2. Place On/Off Valve assembly into lubrication Can.
3. Grab the Grip holder and Simplis Grip.

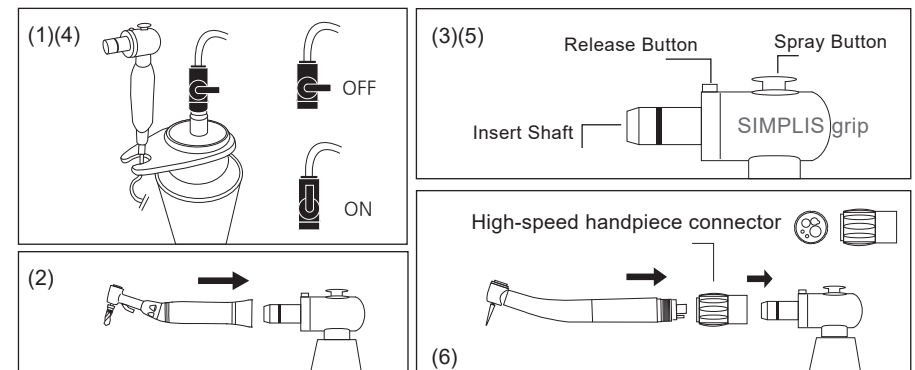
Pass the Simplis Grip through the Grip holder and set Grip holder on Valve Assembly.



- Turn the valve lever OFF first before use.
- Lubrication could leak if On/Off Valve is not inserted properly.

### How to Use

- (1) Turn the ON/OFF valve lever to ON.
- (2) Connect the handpiece to the SIMPLIS grip.
- (3) Push the spray button until clear liquid is released from the handpiece.
- (4) Once the lubrication process has been completed, turn the ON/OFF valve lever to OFF.
- (5) Push the release button to unlock the handpiece.
- (6) For High-speed handpieces, please use the High-speed handpiece connector to attach to the SIMPLIS grip.



- Shake the spray can well before using.
- Check the handpiece to make sure it is inserted and correctly secured.

**Caution** • Do not press the release button while spraying. The handpiece could eject due to high pressure.



**SAESHIN**  
AMERICA

216 Technology Dr. Ste F, Irvine, CA 92618  
T. 949-825-6925 E. ssa@saeshin.com

[www.saeshin.us](http://www.saeshin.us)